

Image

6

OCT

1311

63

SITTERSON
DOUGHERTY
ASTONE
ESPOSITO

FREE PLANET



Sed

ESTIMATED
TIME UNTIL
CONTACT: 30
MINUTES.

Lack of Reavers
implies conquest--
not spoliation--as
primary objective.

Dreadnought presence
indicates high-level
commitment to and
importance of action.

Auxiliary Screammers
create possibility of
multiple fronts within
area of operations.

Aegis antiship weapons 73%
operational; insufficient to
neutralize Dreadnought.

Limited opportunity to
engage outside Lutheran
space, rapidly depleting.



WE HAVE
TO TEST THE
ORCHALEUM
BOMB SOME
TIME.

THE WRECK
INCIDENT PROVES
HOW EFFECTIVE
IT COULD BE.

KATJA!



HOW CAN YOU
EVEN SUGGEST
THAT?!



WHAT
CHOICE DO
WE HAVE?



THE WRECK WAS A
MASSACRE! WE'RE
GOING TO REPEAT
IT?!



RECKON THE
ORDURANS WOULD
HESITATE?



OR IDA
FOR THAT
MATTER?



THE ESTIMATED BLAST
EFFECT WOULD DEMOLISH
THE DREADNOUGHT.



DEMOLISH ALL
THOSE RAW
MATERIALS?



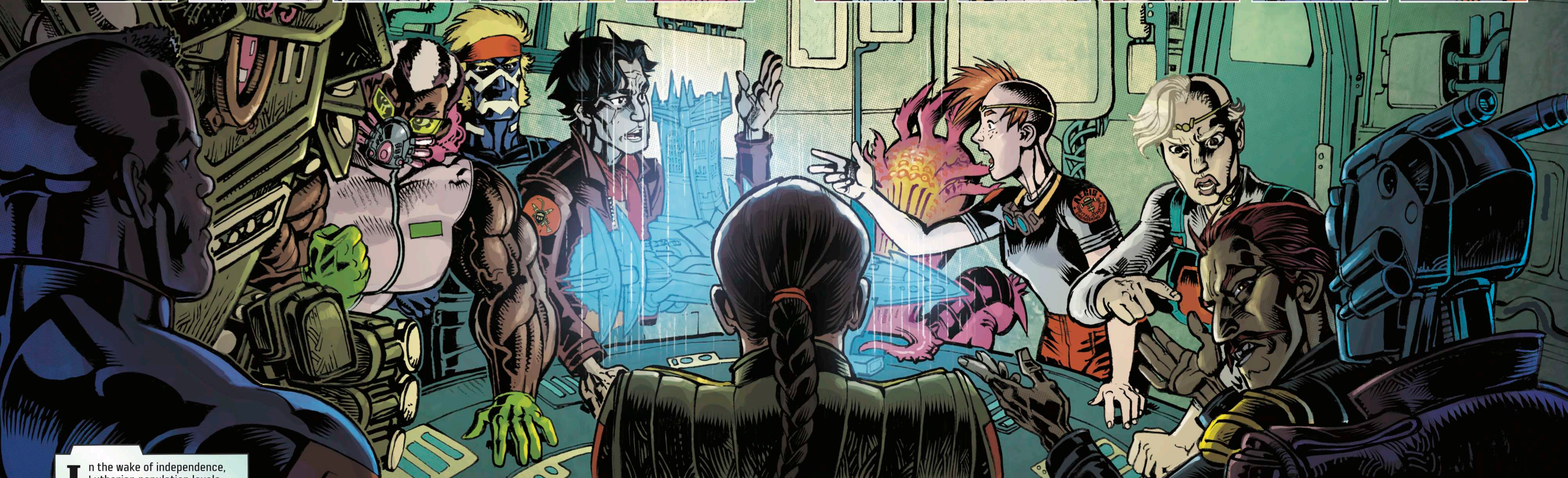
IF WE MOVED
QUICKLY, THERE'D
BE NO RISK TO
THE SURFACE.



HOLLOWING OUT
OUR MOUNTAINS
FOR FUEL IS BAD
ENOUGH.



EVEN IF ALL OUR
KESTRELS WERE
OPERATIONAL...



In the wake of independence, Lutheran population levels held steady at 6.5 million, with repatriating Alliance loyalists replaced by a flow of immigration that, wholly unregulated, would become a flashpoint of controversy within the fledgeling society.



Population dispersion changed significantly, however, with the planned orchaleum industry downturn, the resulting exodus from utilitarian extraction and refinery sites, and the increasingly dense concentration of Lutheran citizens within the planet's handful of cities.



25 MINUTES
UNTIL CONTACT.

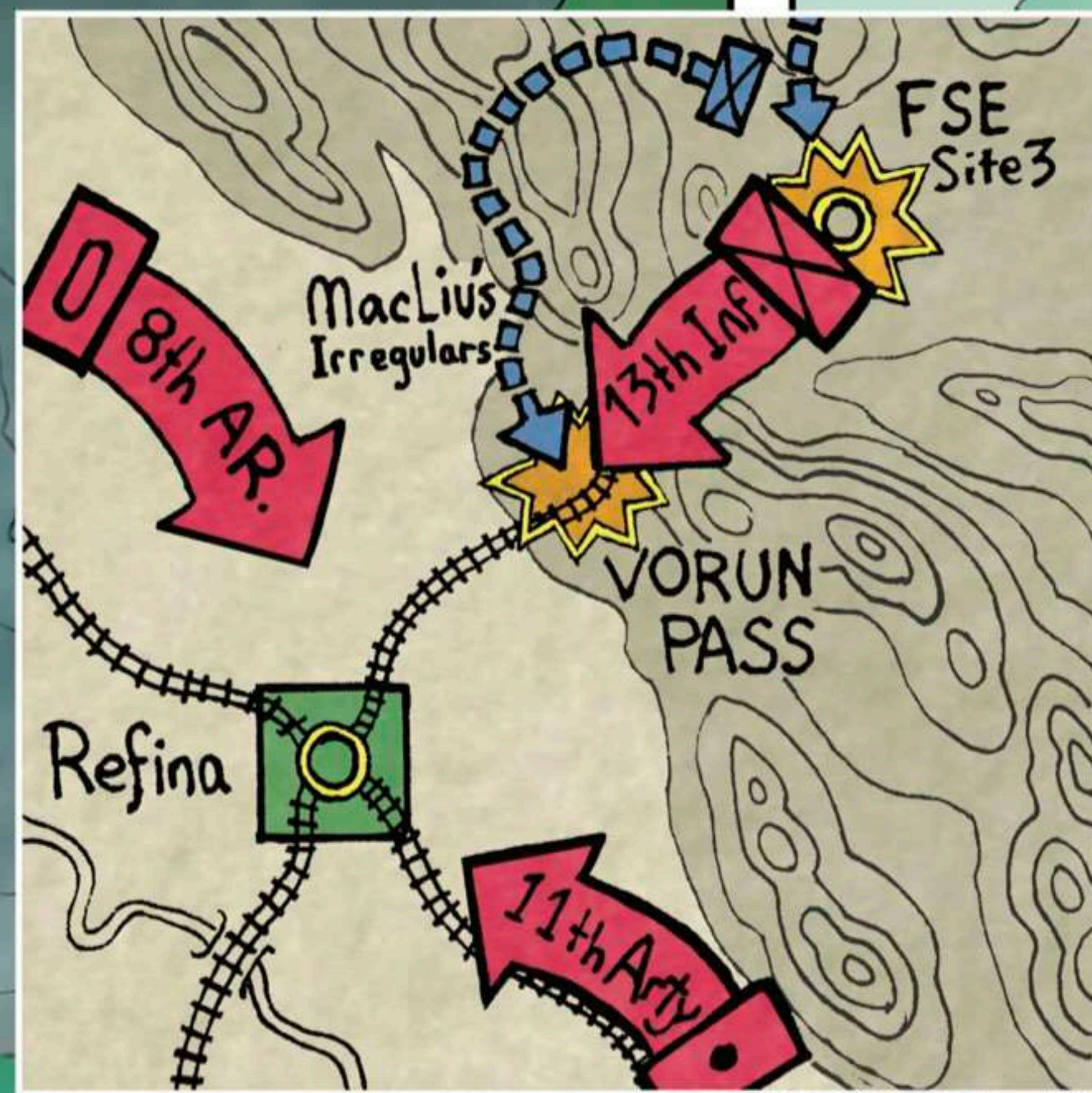
WE NEED
THE SALVAGE.
PREFERABLY
PRISONERS TO
INTERROGATE.

THE BOMB
PREVENTS THAT.
IT'S UNTESTED.
RISKY.

VICTOR...



...TIME TO SHOW
OFF THAT TACTICAL
BRILLIANCE EVERYONE
RAVES ABOUT.



Alliance cruelty has been extensively documented in the Lutheran literature, inclusive of Far Star Security efforts to quell pre-Revolution labor revolts and military initiatives to combat insurgencies during the grueling three-year war.

Upon this mostly barren, hostile landscape, housing a sparse, rural and Surroko population all too willing to support the insurrection, guerrilla tactics proved an effective counter to the Alliance's numerical, technological and financial superiority.

While the prevailing Lutheran view holds that the guerrillas' sole targets were the Alliance and its proxies, it would be disingenuous to claim that the revolutionary forces were, themselves, innocent of harm to civilian noncombatants.

The disconnect is rooted in the received wisdom that the revolution garnered universal support. This was far from the case, however, as significant numbers of managerial staff, technicians, scientists and larger landholders remained loyal to the Alliance.

IT'S NOT JUST IDA TROOPS.

KEEN, WE CAN'T LET THEM AUGMENT THE 8TH AND 11TH.

REFINA IS FILLED WITH COMPANERES... WORKERS, THEIR FAMILIES.

THE PRICE OF FREEDOM IS BLOOD...

...EITHER THEIRS OR OURS.

As ever, even the most just, most righteous conflicts become inevitably marred by the euphemistically described collateral damage.

Lutheran Guerrilla Tactics, Efficacy of

